



GAT MONTHLY MEMBERSHIP PROGRESS REPORT

Results as of: 10/31/2022

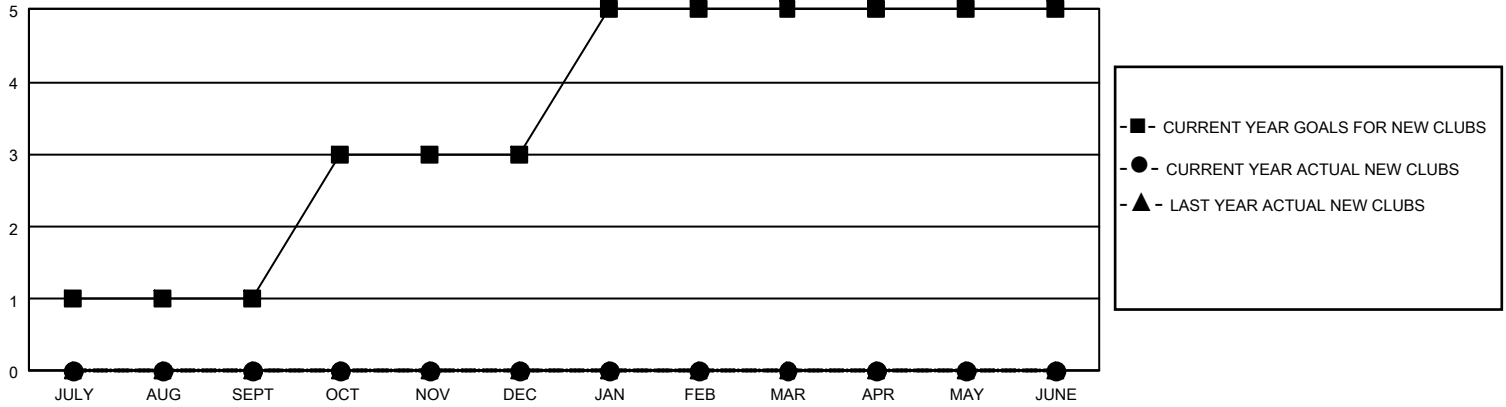
GMT Constitutional Area 2, Group C

REPORT DOES NOT INCLUDE CLUBS IN UNDISTRICTED AREAS.

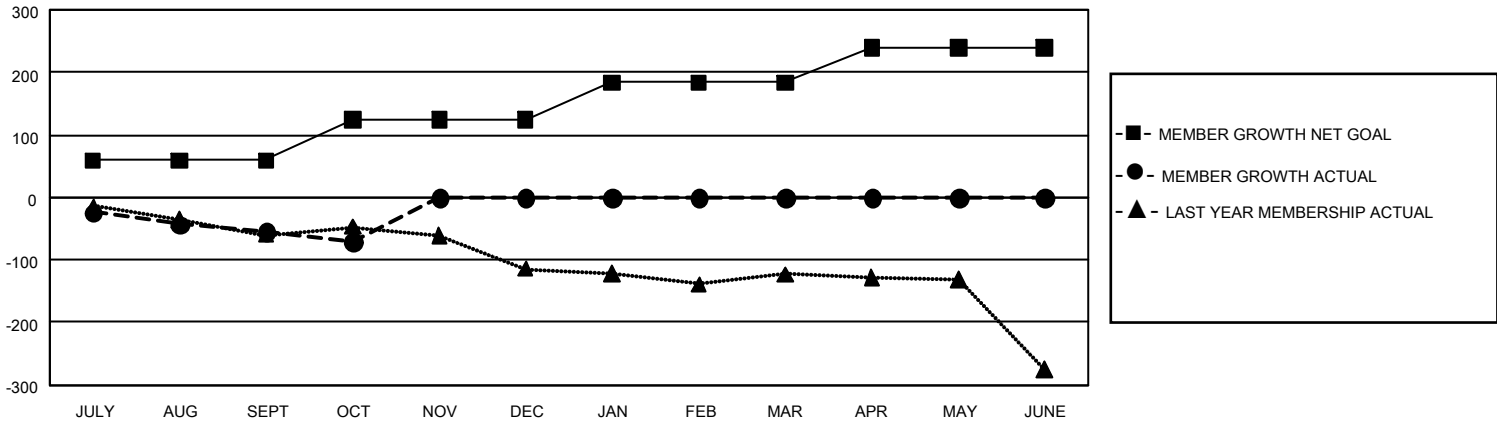
| Clubs | | | |
|-----------------------|---------------|-----------|---------------|
| RESULTS FOR 2022-2023 | | | |
| QUARTER | NEW CLUB GOAL | NEW CLUBS | DROPPED CLUBS |
| JULY/AUG/SEPT | 3 | 0 | 0 |
| OCT/NOV/DEC | 6 | 0 | 0 |
| JAN/FEB/MAR | 6 | 0 | 0 |
| APR/MAY/JUNE | 0 | 0 | 0 |

| Members | | | |
|-----------------------|------------------------|----------------------|--|
| RESULTS FOR 2022-2023 | | | |
| QUARTER | MEMBER GROWTH NET GOAL | MEMBER GROWTH ACTUAL | DROPPED MEMBERS ACTUAL (including transfers) |
| JULY/AUG/SEPT | 59 | 28 | 77 |
| OCT/NOV/DEC | 65 | 31 | 45 |
| JAN/FEB/MAR | 60 | 0 | 0 |
| APR/MAY/JUNE | 55 | 0 | 0 |

GOALS AND ACTUAL NEW CLUBS CUMULATIVE



GOALS AND ACTUAL MEMBERS CUMULATIVE



| | |
|------------------------|------------|
| DROPPED CLUBS: 0 | |
| DROPPED MEMBERS | |
| DECEASED | 17 |
| CLUB CANCELLED | 0 |
| OTHER | 105 |
| TOTAL | 122 |

31 CLUBS OF 159 ADDED 1 OR MORE NEW MEMBERS

[CLICK HERE FOR CUMULATIVE MEMBERSHIP DATA](#)

| GENDER DISTRIBUTION | |
|---------------------------------|----------------|
| MALE | 2,215 (66.06%) |
| FEMALE | 1,138 (33.94%) |
| NON BINARY | 0 (0.00%) |
| PREFER NOT TO ANSWER | 0 (0.00%) |
| TOTAL FAMILY UNIT MEMBERS | 627 |
| FAMILY MEMBERS PAYING HALF DUES | 320 |